



---

*Simplifying System Management*

## MULTI-PLATFORM SOLUTIONS

An introduction to Sysgem's holistic suite of multi-platform enterprise management products and solutions



---

*Simplifying System Management*

# Overview of Sysgem's Products and Solutions

## Sysgem Enterprise Manager (SEM)

pages 2 - 3

Learn about our flagship product Sysgem Enterprise Manager (SEM) which unites multi-platform system, configuration and user account management with security auditing and compliance management in one single console with support for OpenVMS, UNIX/Linux, Windows and IBM i platforms and popular layered applications.

## SEM's Multi-Platform Application Modules

pages 4 - 5

With its independent and flexible application modules, SEM can easily be customized to a customer's specific needs - ensuring you get the maximum ROI out of your critical enterprise management tools. In use by both internal IT teams and MSPs, discover the benefits of SEM for organizations of any size.

## Password Management, Remote Access and Security & Audit Compliance

pages 6 - 7

From password management to remote access, Sysgem offers a range of products to increase the efficiency and productivity of internal and external IT teams and help desks while assisting companies to comply with mandated regulatory requirements, including audit regulations. Together with our dedicated 24/7 support, our solutions empower enterprises and managed services providers to keep mission-critical systems running at peak performance.



# System Enterprise Manager (SEM)

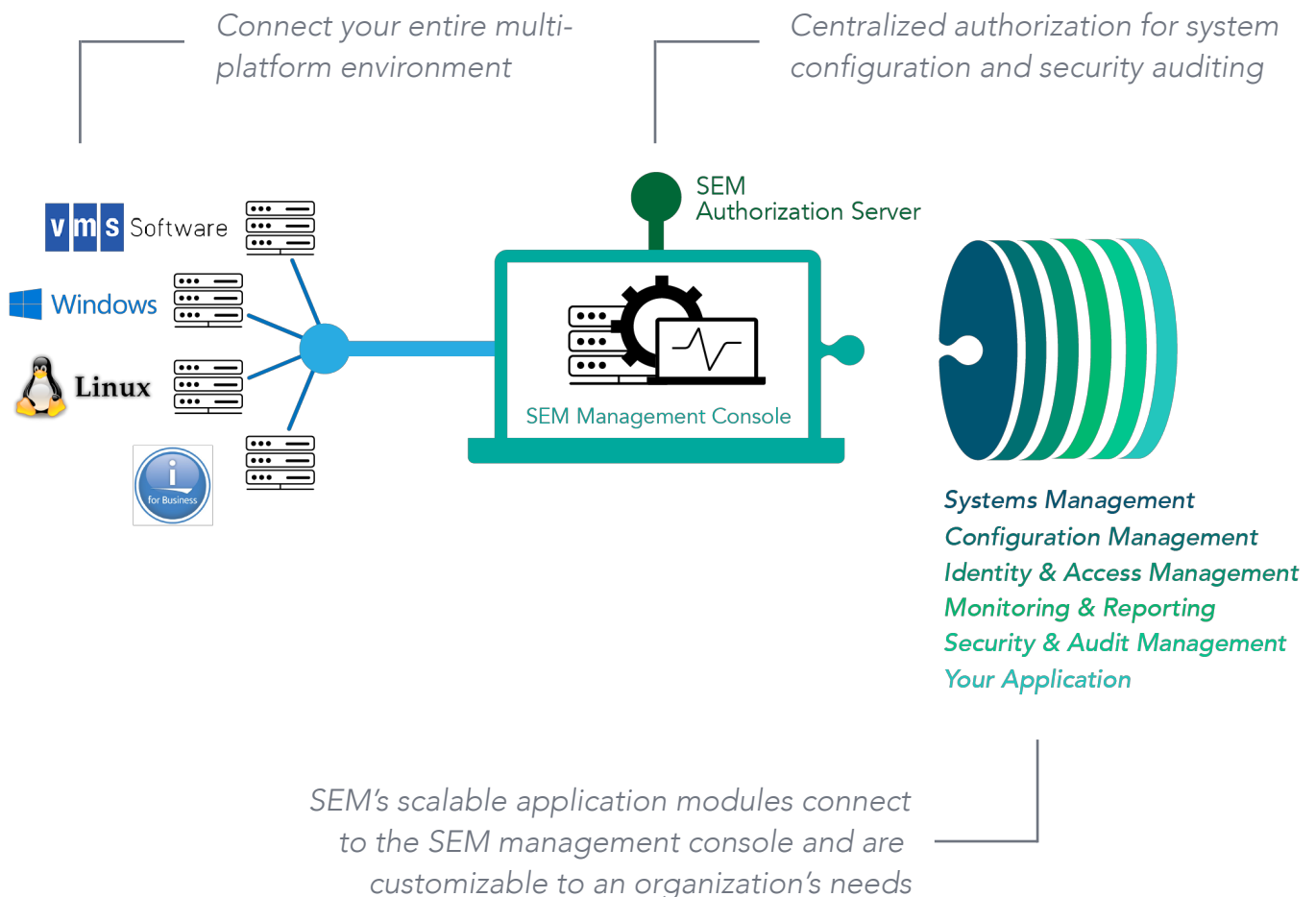
System Enterprise Manager enables organizations of any size to efficiently unite, simplify and integrate critical systems, user account and security management functionalities across their multi-platform environments within one single tool.

Developed from the core to support businesses's mission-critical systems when unexpected downtime is simply not an option, SEM simplifies system management across all OpenVMS, IBM i, Windows and Linux/UNIX environments.

Consisting of independent application modules, SEM is configured specifically to your organization's distinct technological and managerial needs in the areas of:

- **System and Configuration Management**
- **Identity and Access Management**
- **Monitoring and Reporting**
- **Security and Audit Management**

With out-of-the-box support for many layered applications, such as MS Exchange, SQL Server and Oracle, as well as extensive customization and development facilities, SEM can be put to work in your environment right away to effectively reduce the daily system maintenance and troubleshooting workload on your organization's system administrators and IT infrastructure.





# MULTI-PLATFORM SYSADMIN | IAM | AUDIT & COMPLIANCE



Designed for multi-platform environments



Integrate legacy systems and applications pre- and post-migration



Fully customizable and scalable application modules



24/7 support for proactive operation of mission-critical systems

## SEM KEY FEATURES

- One single unifying management console to integrate, administer and manage all connected systems across modern and legacy environments with support for Windows, Linux/UNIX, OpenVMS and IBM i
- Fully customizable performance and availability monitoring with reporting and intelligent alarm functionality of on-premises and remote systems and applications
- Centralized authorization, security, configuration, access control, and audit trail with SEM's Authorization Server as the focal point of the SEM framework
- Gain full visibility, control and governance of all enterprise systems, application accounts and user identities with SEM's privileged access management
- Ensure transparency and accountability of all system and user activity to safeguard security and compliance needs
- Flexible and modular products: unify systems and configuration management, identity and access management (IAM), monitoring and reporting as well as security and audit compliance tools in one single screen
- Sysgem's remote access tools can be optionally added to simplify help desk workflows
- Emphasis on simplifying the administration and management of complex heritage infrastructure and applications that support mission-critical operational business systems

# Simplifying System Management with SEM

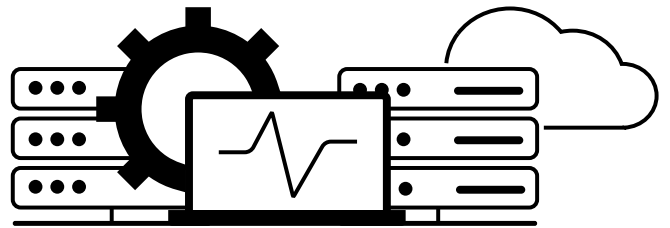
For over 20 years, Sysgem's flagship product has been chosen by multi-national enterprises and SMBs as well as governmental and military institutions across the globe as their preferred system management tool.

Understanding the complexity of heritage IT environments, Sysgem is one of the few providers continuously developing state-of-the-art system management tools for organizations still relying on legacy systems and applications — such as those running on OpenVMS — to power their mission-critical systems where downtime is simply not an option.

Sysgem's cross-platform focus supports a highly efficient integration of legacy and modern system management on one single screen. Providing centralized administration and auditing functions as well as a wealth of features to aid users in their day-to-day account and system management tasks, SEM requires minimal user training due to its intuitive UX design.

Following a swift installation, SEM scales flexibly as your organization grows and its IT infrastructure strategy evolves. Intuitive in use

and offering dedicated 24/7 operational and customization support, SEM deskills many common sysadmin tasks, enabling IT support teams to manage cross-platform system administration tasks.



From IAM to configuration and audit management, customers using SEM show significant savings in their organization's total cost of ownership, providing a high ROI in comparison with other tools.

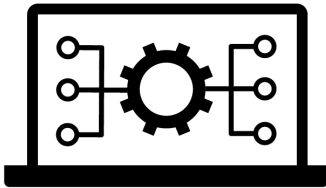
By ensuring a low overhead on the managed systems, Sysgem's flexible software products minimize daily maintenance efforts for system administrators and security managers alike. SEM was designed to encourage a high degree of user flexibility and customization without compromising security. Contact us today to learn how Sysgem can support your organization.



# SEM Application Modules

SEM's application modules are individually configurable and customizable to an organization's and user's specific requirements. SEM's agents run on all major platforms (Windows, UNIX/Linux, OpenVMS and IBM i) while its central management console (GUI) and authorization server require Windows. Beyond Sysgem's support for layered applications such as MS Exchange, MS SQL Server, ORACLE, SAP, Lotus Domino and Sybase, bespoke modules to support internal applications and other requirements can easily be developed by customers using the Sysgem Development Manager or on request by Sysgem.

## Sysgem System Manager (SSyM)



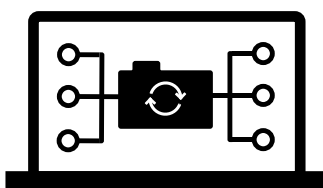
- ✓ A single console to manage all of an organization's servers, devices, databases and layered applications in a cross-platform environment
- ✓ Proactively manage and intelligently monitor the health and performance of a heterogeneous system environment and 3rd party applications
- ✓ Control enterprise-wide services, processes, jobs and queues across the network from one central location

## Sysgem Account Manager (SAcM)

- ✓ Identify, organize and administer user accounts across all enterprise servers, devices and applications, providing platform-independent identity and access management
- ✓ Proactively and securely automate the governance of administrative access to business-critical systems, data and applications while enforcing your organization's access policies
- ✓ One unifying console to add, modify and delete users and their accounts as well as privileged access across multiple platforms and applications — individually or in bulk



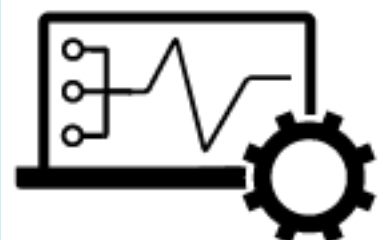
## File Synchronizer (SFIS)



- ✓ Centralize configuration management on servers and end-user devices in a multi-platform network using the SFIS source file repository
- ✓ Ensure the integrity of configuration files across a heterogeneous IT environment with automated distribution and synchronization processes, intelligent monitoring, reporting and alerts
- ✓ Integrated archive control and complete audit trails provide full accountability

## Monitoring and Reporting (VMS Monitor, SEM Dashboards)

- ✓ Highly configurable and customizable cross-platform system monitoring and reporting solution for legacy and modern IT environments — for performance, health and availability as well as audit compliance
- ✓ Monitor mission-critical systems for break-ins, inappropriate file and directory access, illicit installs, out-of-hours access, system time changes and more
- ✓ Dedicated monitoring and reporting tools for OpenVMS and newly migrated environments



# System solutions: your partner for mission-critical system support

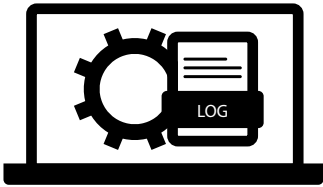
- Full visibility of the cross-platform system's hardware and software capacity usage with intelligent alerting and analysis to prevent operational holdups, cleanup and reprocessing work — increasing system uptime and the productivity of IT help desk and sysadmin teams
- Identity and Access Management (IAM) tools designed not only for managing standard users' identity and access but also to inherently control, track and safeguard privileged access across an organization's network infrastructure
- Streamline and secure the performance and health of heterogeneous and integrated IT infrastructure independently of its complexity with automated monitoring and reporting functionality
- Ensure full audit and regulatory compliance with cross-platform configuration management
- Easily-installable and customizable script-driven tools with low overhead
- Manage, monitor and secure administrative access to organizations' infrastructure for MSPs and IT outsourcing vendors with SEM
- Support heritage (legacy) IT environments as easily as modern systems which are critical to an organization's operations by simplifying traditionally high-skilled and complex administration, adaptation and development work
- Dedicated 24/7 support and custom development expertise for legacy and modern infrastructure management — extending business capacity for internal IT teams and MSPs with a trusted partnership

- ✓ All core system analytics across all servers conveniently organized in one centralized tool with SEM — across Linux/UNIX, Windows, IBM i and OpenVMS
- ✓ Extending IT teams' technical expertise with familiar workflows and tools
- ✓ Hardware- and OS-agnostic and optionally extendable to all devices using SNMP
- ✓ Real-time monitoring, automated alerting and activity log management
- ✓ Offering highly customizable extensions to simplify system management operational needs

# Supplementary Sysgem Solutions

Next to our flagship product Sysgem Enterprise Manager (SEM), Sysgem offers a variety of additional products to streamline enterprise infrastructure, user account and end-user devices management in the areas of log data management, password management and remote access.

## Logfile Concentrator



- ✓ Obtain full visibility and transparency of all user and system activities across your entire multi-platform environment with a central log file database and protected audit trail
- ✓ Record and automate analysis of privileged activity to proactively detect security threats so you can ensure integrity and transparency of all audit trails
- ✓ Intelligent alarms streamline your administration while reinforcing your security provisions

## Password Management Products



**Self Service Password Reset** enables users of Windows accounts to reset their own forgotten passwords without requiring support from the help desk

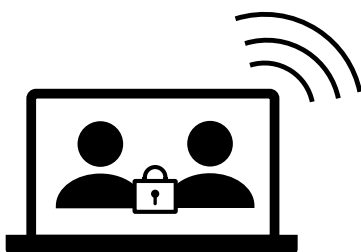


**Password Policy Enforcer** extends the inherently limited password policies of the Windows operating system in order to meet higher security standards of a customer's organization



**Password Synchronizer** intercepts password changes on users' Windows accounts and propagates changes across the network to their accounts on other platform servers (such as UNIX, Linux, OpenVMS, IBM i) or to other Windows domains and local accounts while offering security configuration settings for specific accounts or types of accounts

## Remote Access Products



**Sysgem Access Gateway** provides self-hosted, secure and controlled remote access to the desktops of Windows workstations, laptops and servers whether inside or outside network boundaries



**SysMan Remote Control** is a powerful tool for remotely controlling end-user devices across your enterprise network including support for automated or remote deployment as well as control of Terminal Services and Remote Desktop sessions



**SysMan Utilities Professional Edition** is an advanced remote administration tool that offers extensive management capabilities on Windows servers and end-user devices in the network

# About Sysgem AG

Founded in 1998 by former DEC and IBM engineers in Switzerland, Sysgem has been developing innovative solutions to simplify system, identity and access management for over 20 years.

## Harmonizing modern and legacy operating systems together in one tool

Since its beginnings Sysgem has focused on integrating the management of both modern and legacy systems into powerful multi-platform tools.

Sysgem's solutions have been used for over two decades by internal and external IT teams of large enterprises and SMBs as well as governmental and military institutions around the world, as part of their holistic system management strategy.

## Customizable solutions to empower your success

Our key focus on customizable and versatile system management products has allowed Sysgem's customers to easily develop unique solutions specific to their evolving IT management needs of their often mission-critical systems.

## Uncompromising support for mission-critical systems

Together with our partners, Sysgem provides full 24/7 support for OpenVMS, Windows, Linux, UNIX and IBM i systems so our customers can rely on us to provide the tools to keep their systems running efficiently at peak performance.

Contact us today to find out how Sysgem can streamline your organization's infrastructure management.



*Simplifying System Management*

## Contact Us

[sales@sysgem.com](mailto:sales@sysgem.com)

[www.sysgem.com](http://www.sysgem.com)







# Sysgem AG

Forsterstrasse 67  
CH-8044 Zurich  
Switzerland

[www.sysgem.com](http://www.sysgem.com)

© 2019 Sysgem AG, all rights reserved.

Sysgem is a trademark of Sysgem AG, other brands and products are trademarks of their respective owners.