

# Sysgem SysMan Utilities (Professional Edition)



## Quick Start Guide

### Introduction

SysMan Utilities (Professional Edition) provides tools for administering remote Windows systems and provides 'Remote Control' to access distributed systems. It is normally installed as:

1. A Windows Service on a central server for the management of SysMan user permissions and for authorizing SysMan user access
2. An executable program on administrators' workstations to provide the SysMan user interface

It is normally sufficient to accept all the defaults when installing SysMan but installation options allow the configuration to be modified so that, for example, the location of files installed by the setup program can be changed as appropriate.

The principle for installing SysMan is:

1. Install the central SysMan Authorization Server
2. Get the Authorization Server to issue installation keys for use with workstations
3. Install SysMan Management Consoles on administrators workstations using the installation keys to authorize access to the central SysMan Authorization Server

Refer to the "SysMan Professional Installation and Configuration Guide" for a full description of installing SysMan.

### Installing the Central SysMan Authorization Server

The SysMan Authorization Server runs as a Windows Service on a central server and needs to be reachable by SysMan users for them to be able to log into the product.

During the installation a question is asked about what type of installation is required. Answer this question by selecting the "Install a new Authorization Server" option:



### Logging in to SysMan

Installing the Authorization Server also installs the SysMan Management Console on the central server. The installation finishes by asking whether SysMan should be launched in order to login. Select this option, or start the Management Console from the icon placed on the desktop.

SysMan is provided with two pre-configured SysMan user accounts: "System" and "SysMan" both with a pre-configured password of "sysgem" (case sensitive). Login as the "System" account:



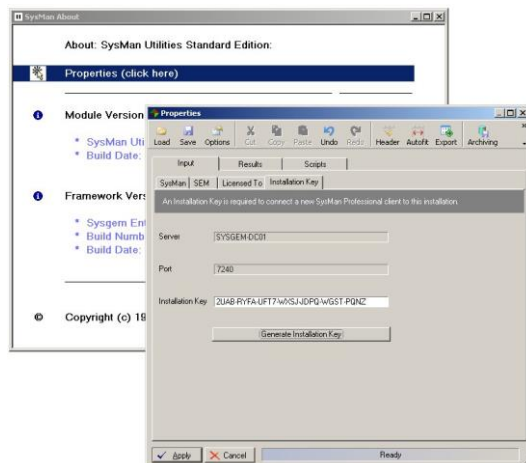
Use port 7240 and 'Localhost' to connect to the Authorization Server during login.

## Managing SysMan User Accounts

SysMan Professional is a multi-user system and each user should be given a separate SysMan account. The "SysMan Professional Installation and Configuration Guide" gives details of how to create accounts for SysMan users and how to give different access permissions to those accounts if different levels of administrators are to be given different SysMan privileges.

## Issuing a SysMan Installation Key

After logging in as "System" start the "SysMan About" window (from the "Configuration" folder) and click "Properties":



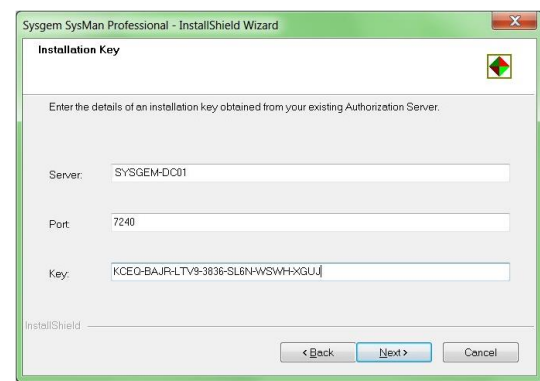
On the "Installation Key" tab click "Generate Installation Key". The key will appear as a string of seven groups of four characters. Select the entire key and use <Ctrl>C to copy the key. This key should then be made available for installing the Management Console on a workstation.

Please take note that the key can be used only once, and a new one needs to be issued for each installation of a Management Console on different workstations.

## Installing Additional SysMan Management Consoles

Use the same SysMan installation kit as was used to install the Authorization Server, only this time select "Connect to existing Authorization Server" at the prompt for which type of installation should be started.

During the installation of the SysMan Management Console a prompt will be given to identify the machine that hosts the SysMan Authorization Server. Use the DNS name or IP address of the central server and paste in the Installation Key issued by the Authorization Server:



## Browsing the SysMan Audit Database

All actions carried out by administrators using SysMan are logged into a central Audit Database and the Audit Trail can be browsed after logging into to SysMan with the "System" account. Start the "Audit Browser" from the "Audit Log" folder:

